

Centro di matrice antica di Corsagna (UTOE 13)



13_01



13_01 retro



13_02



13_03



13_04-05



13_06



13_07-08



13_09



13_10



13_11



13_12-13



13_14



13_15



13_16



13_17



13_18



13_19



13_20



13_21



13_22



13_23-24



13_25



13_26



13_27



13_28



13_29



13_30



13_30_31



13_32



13_33



13_34



13_35



13_37



13_39



13_40-41



13_42



13_43-44



13_45



13_46



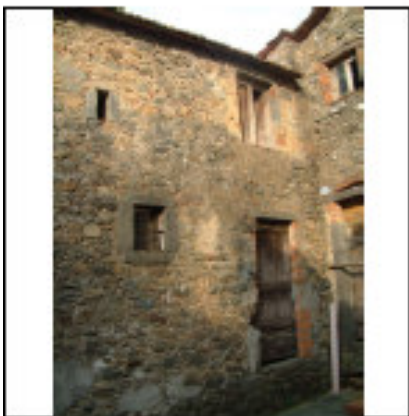
13_47



13_48-49



13_50



13_51



13_52



13_53



13_54



13_55



13_56-57-58-59-60



13_59



13_61



13_62-63



13_64



13_65



13_66



13_67



13_68



13_69-72



13_70



13_71



13_73



13_74



13_75



13_76



13_77



13_78



13_79



13_80



13_81



13_82



13_83



13_84



13_85



13_86 b



13_87



13_88-89



13_90



13_91



13_92



13_93



13_94



13_95



13_96



13_97 -98



13_99



13_100



13_101



13_102



13_103



13_104



13_105



13_106



13_107



13_108



13_110



13_111



13_112



13_113



13_114



13_115



13_116



13_117



13_118



13_119



13_120



13_121



13_122



13_123



13_124



13_125



13_126



13_127



13_128



13_129



13_130



13_131



13_132



13_133



13_134



13_135



13_136



13_137



13_138



13_139



13_140



13_141



13_142



13_143



13_144



13_145



13_146



13_147



13_148



13_149



13_150



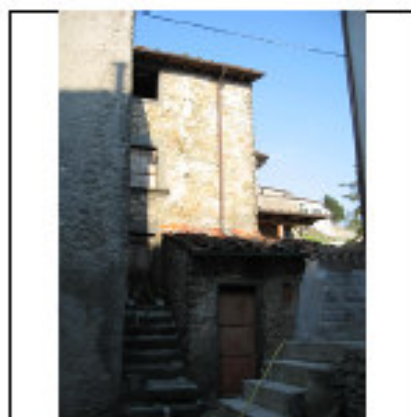
13_151



13_152



13_153



13_154



13_155



13_156



13_157



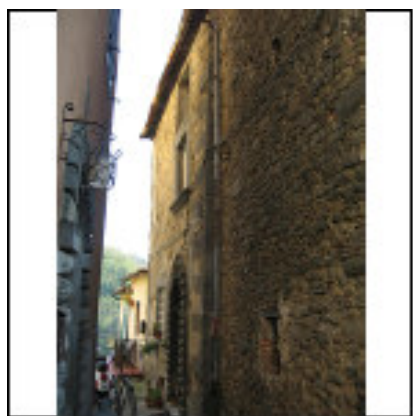
13_158



13_159



13_160



13_161



13_162-163



13_164



13_165



13_166



13_167



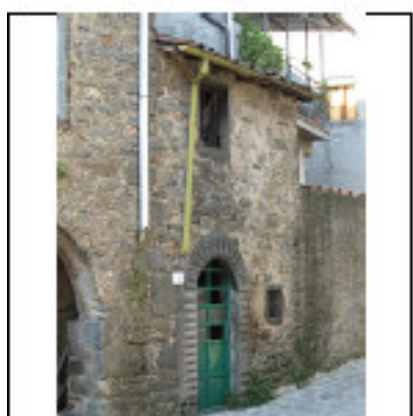
13_168



13_169



13_170



13_171



13_172



13_173



13_174



13_175



13_176



13_177



13_178



13_179



13_180



13_181



13_182



13_183



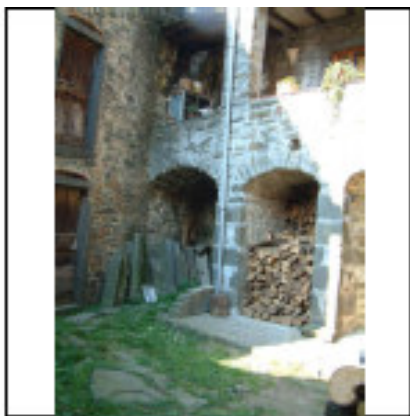
13_184



13_185



13_186



13_188



13_189



13_189_190



13_191



13_192



13_193



13_194



13_195



13_196



13_197



13_198



13_199



13_200



13_201



13_202



13_203



13_204



13_205



13_206



13_207



13_208



13_212



13_214



13_215



13_216